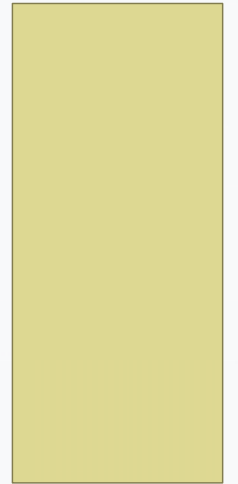




CLIMATE CHANGE BEGINS AT HOME

NAVAJO DEPARTMENT OF FISH AND WILDLIFE
MARCH 12, 2015

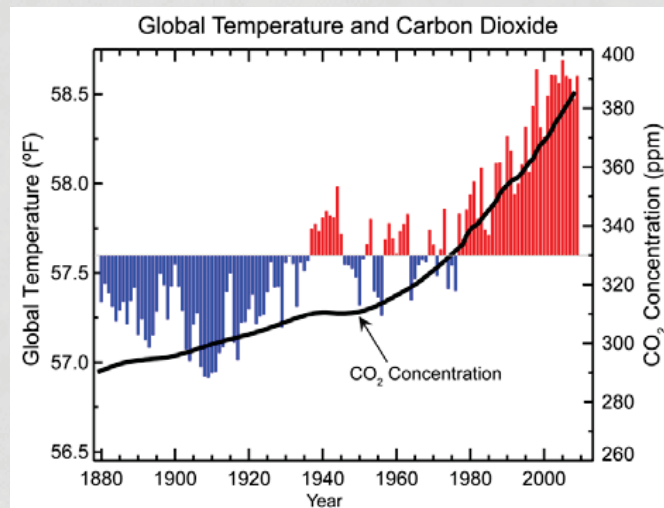


CLIMATE CHANGE

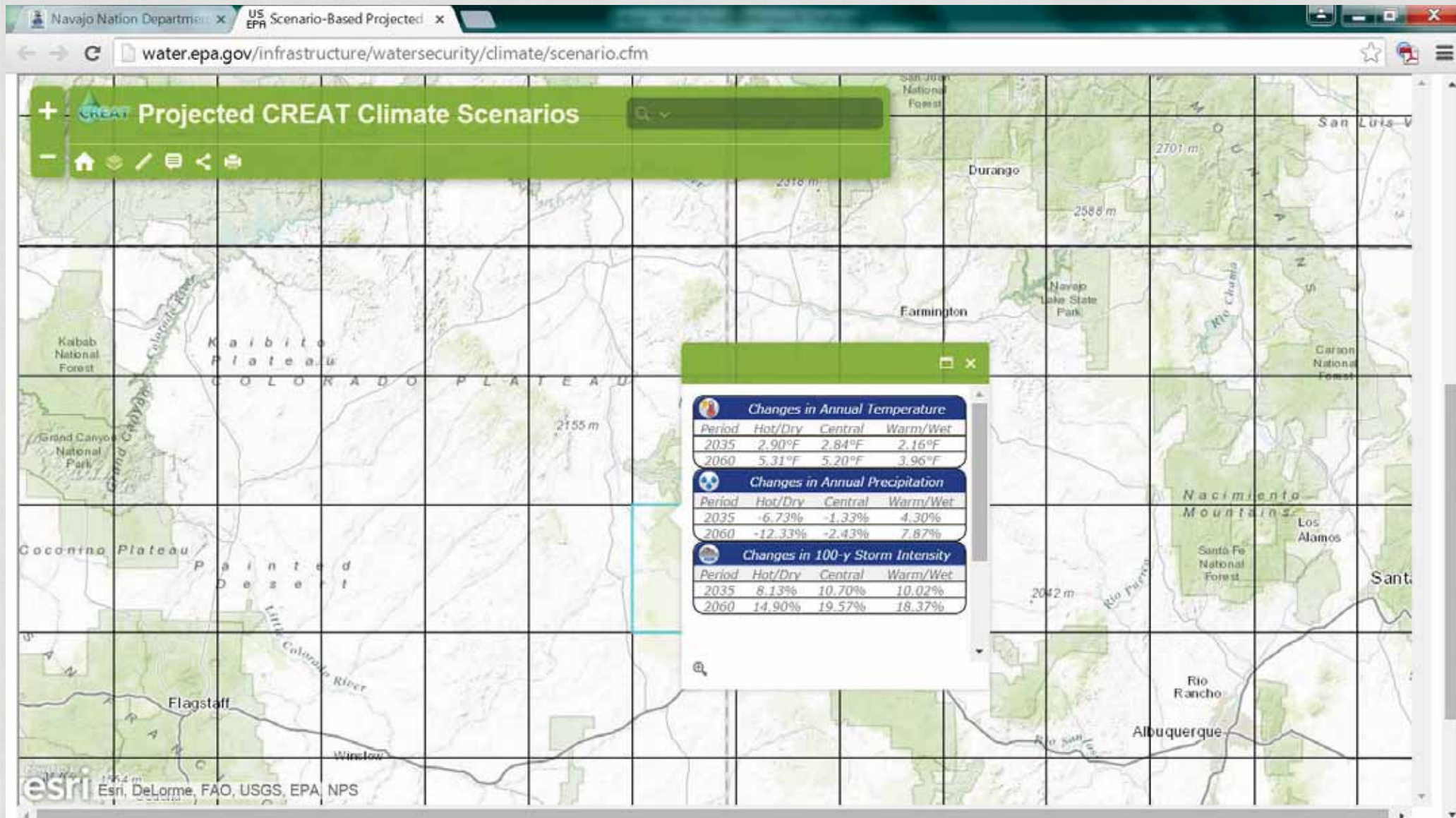
- Big Picture
- Much closer to home
 - Rising Temperatures
 - Shifting Precipitation
 - Extreme Weather
- What can we do?

WHAT'S THE DIFFERENCE?

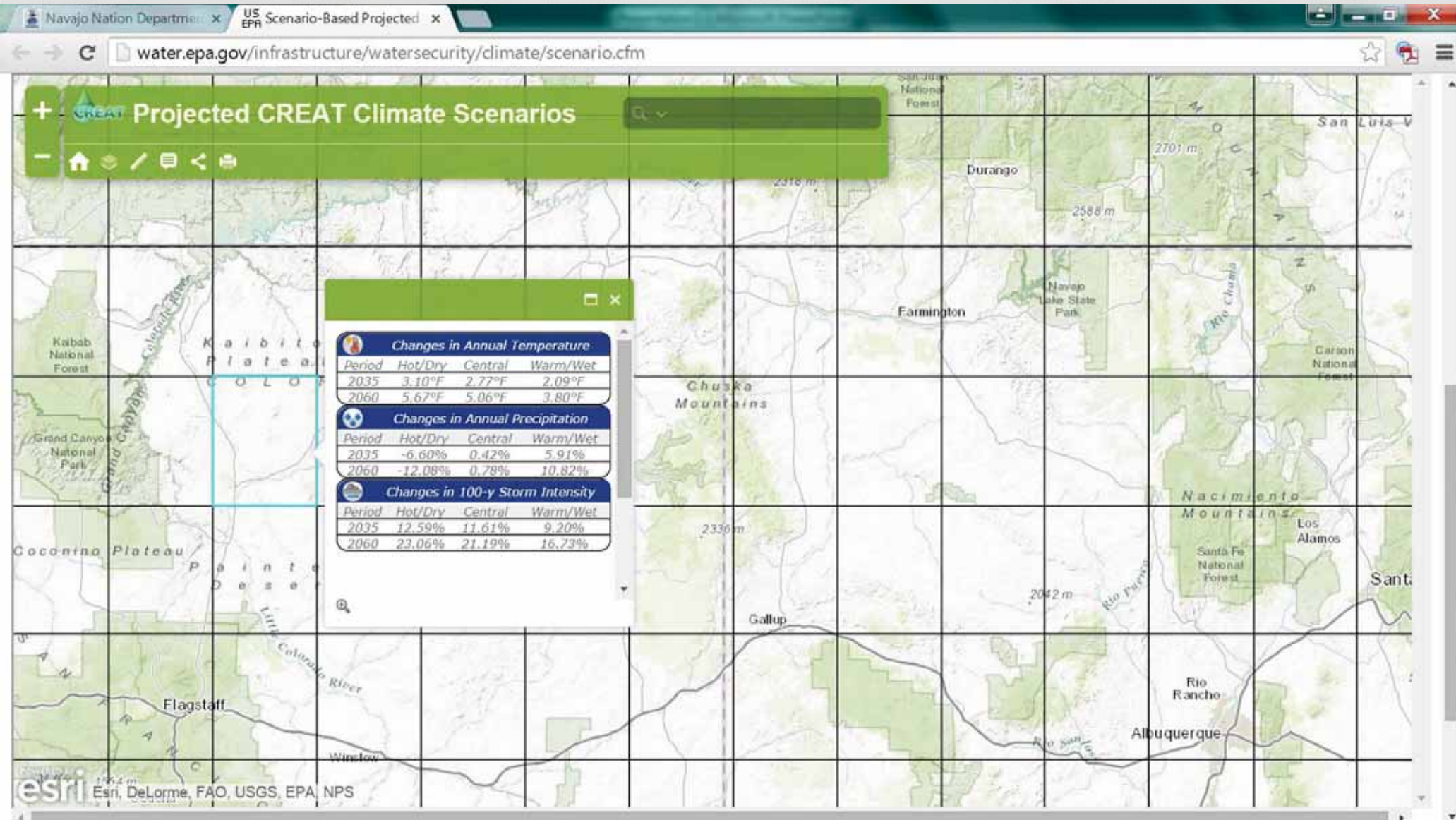
- Climate Change
 - The average long-term change of the Earth's climate including changes in temperature, precipitation and wind patterns over a period of decades or longer.
- Global Warming
 - The increase in the Earth's average surface temperature since the Industrial Revolution.



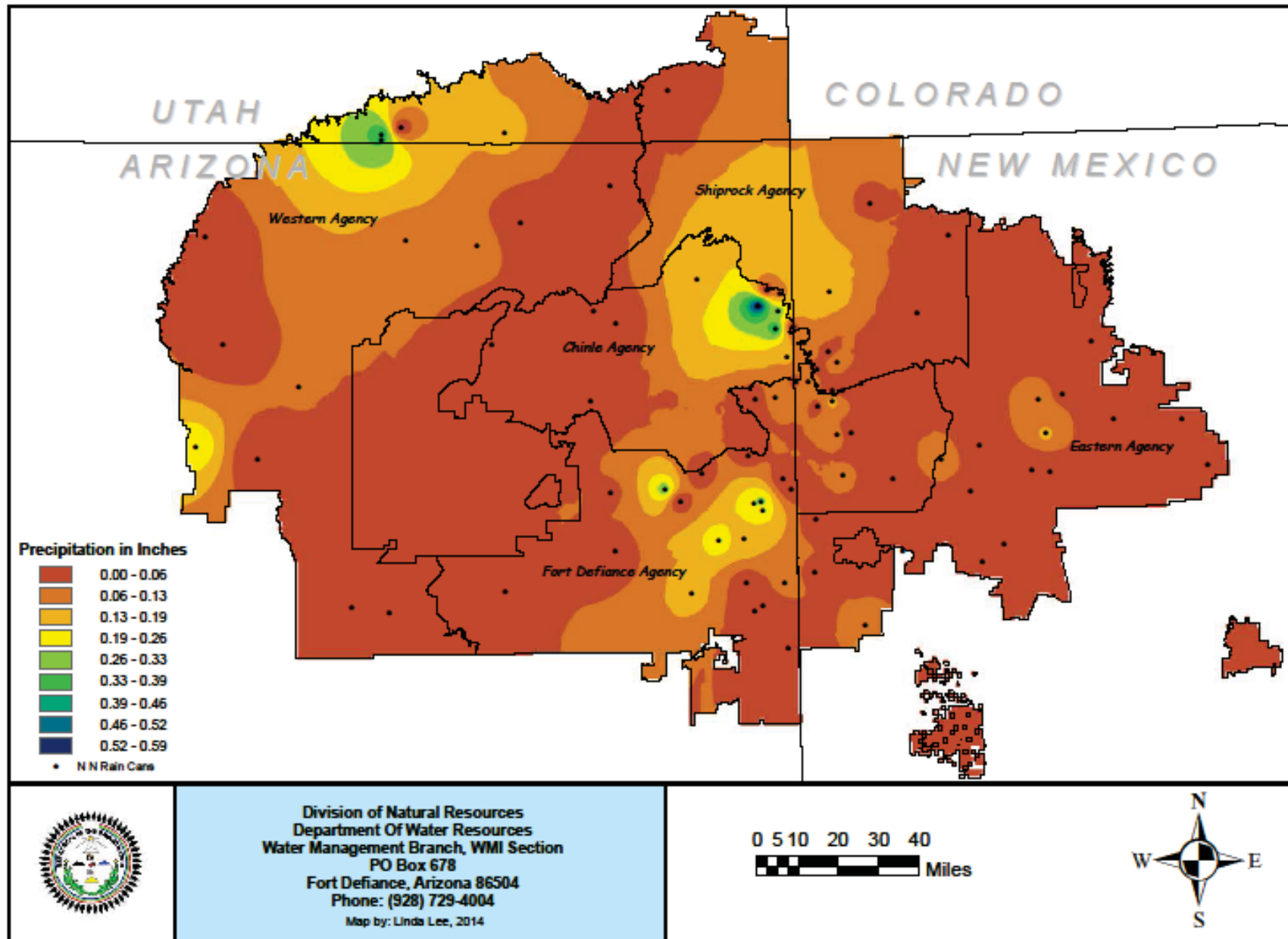
Window Rock, AZ (32 miles x 32 miles Grid)



Tuba City, AZ (32 miles x 32 miles Grid)

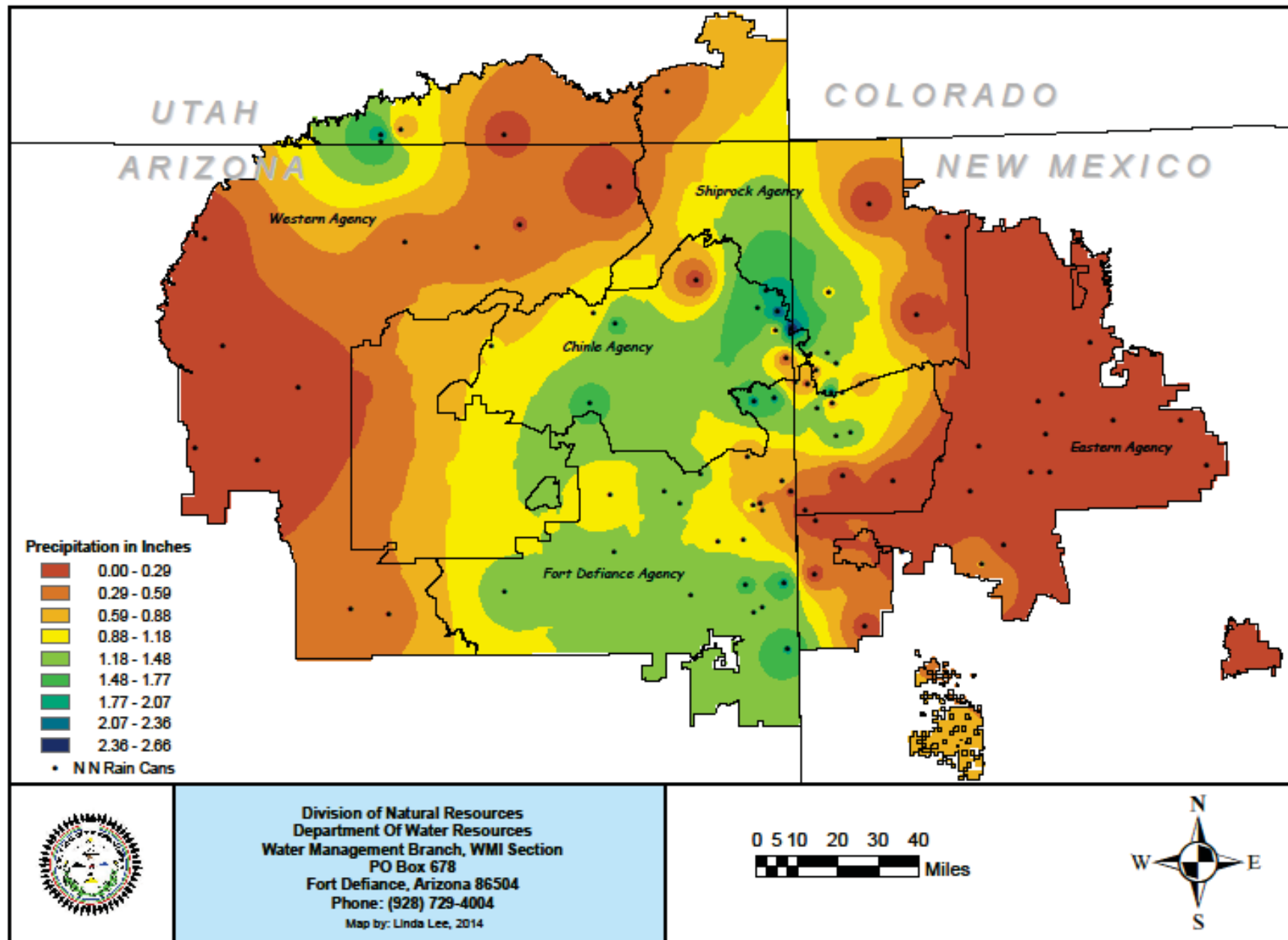


Average Precipitation On The Navajo Nation (January 2014)

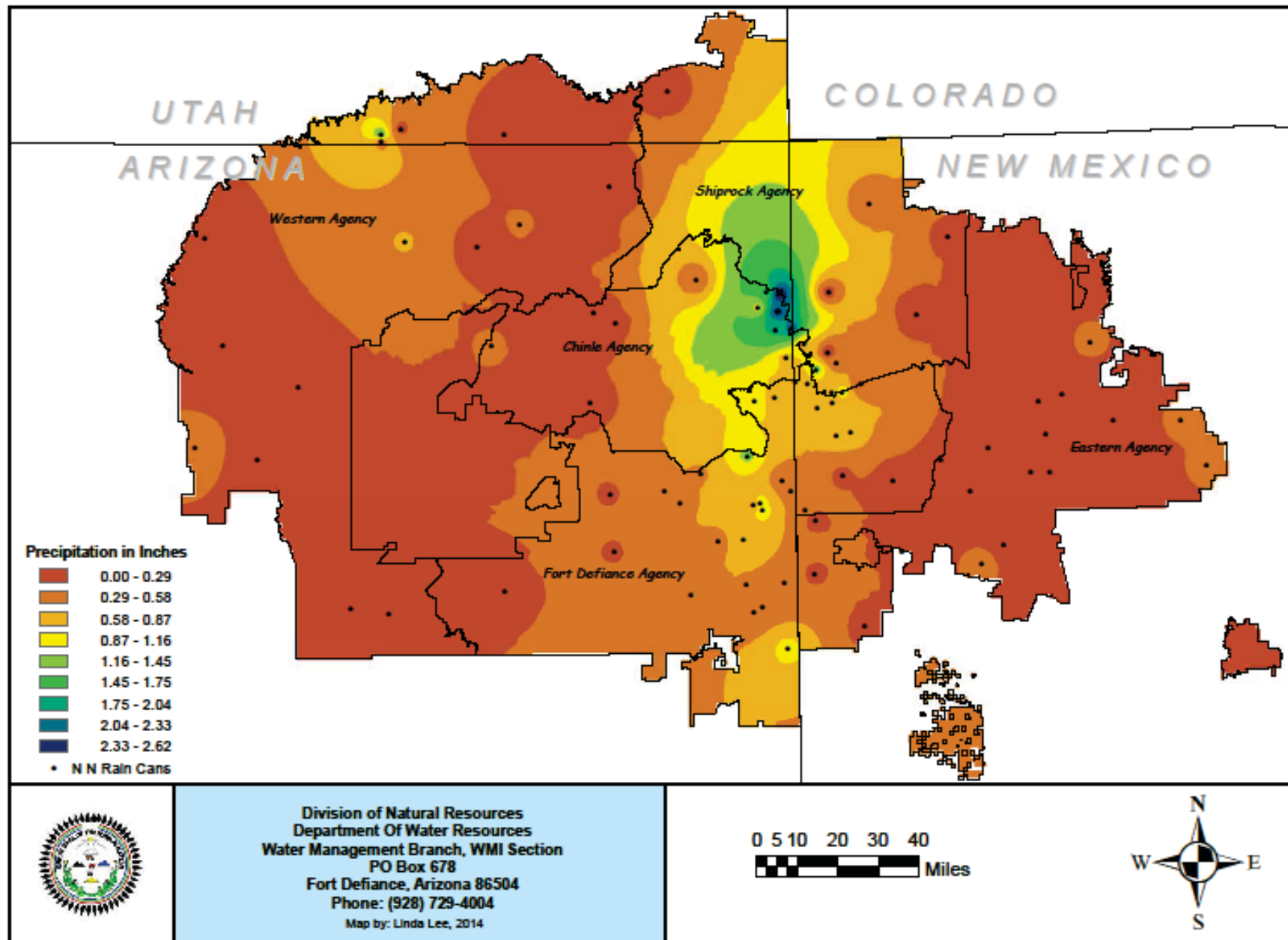


(All the following maps) Navajo Nation Water Management Branch – Water Monitoring & Inventory Section
http://www.frontiernet.net/~nndwr_wmb/PDF/precipitation/Map_11_15.pdf

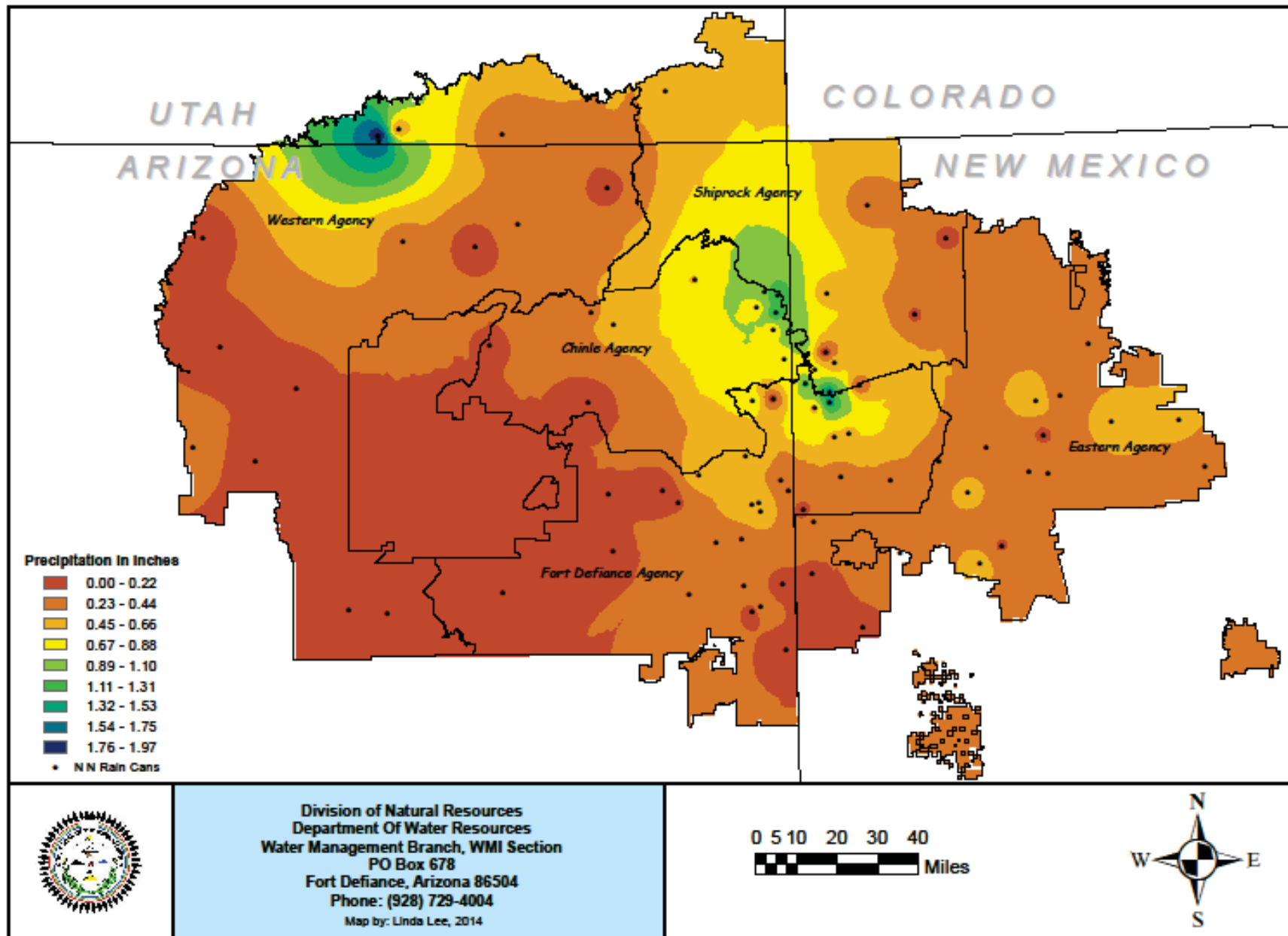
Average Precipitation On The Navajo Nation (February 2014)



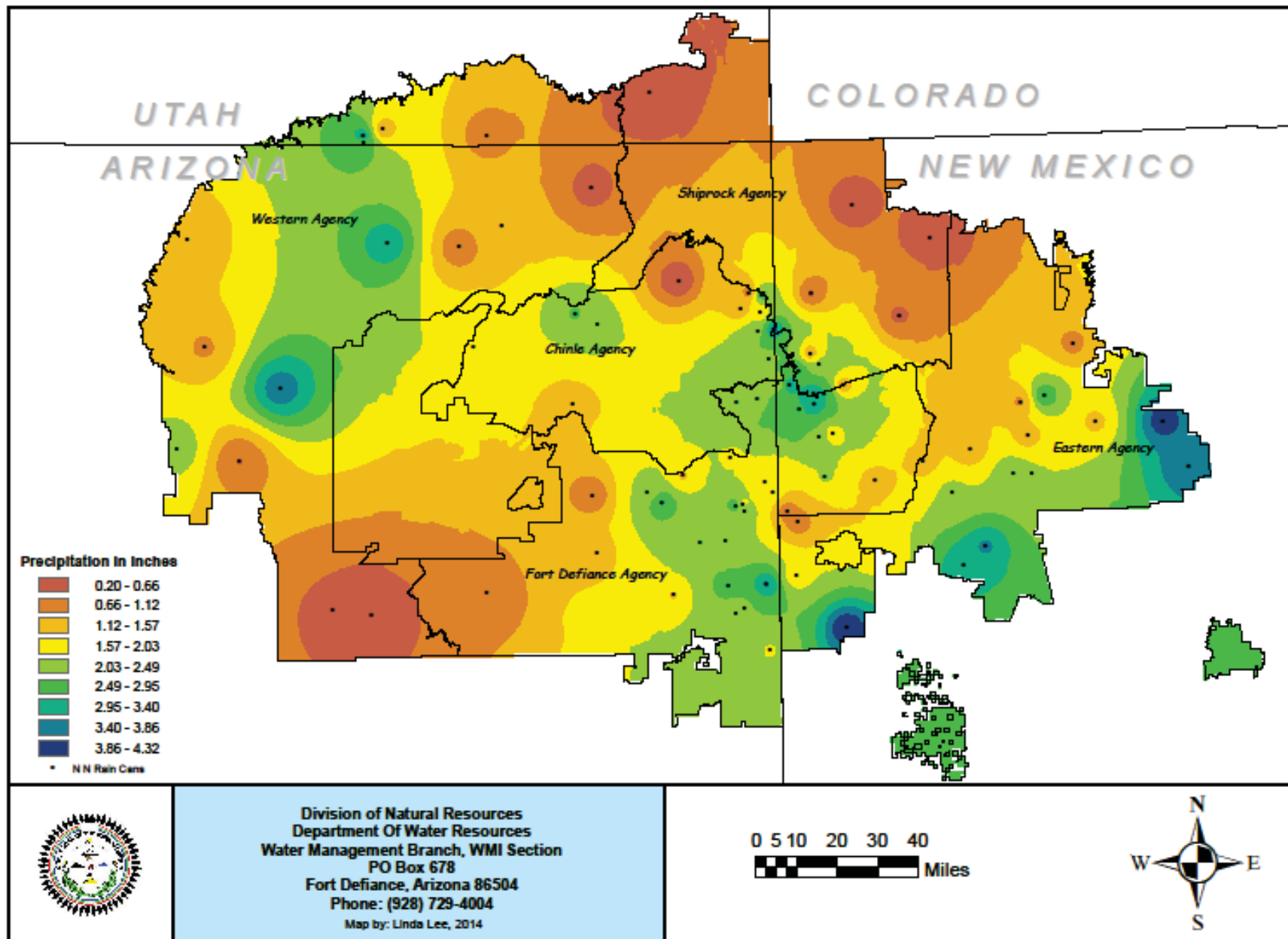
Average Precipitation On The Navajo Nation (April 2014)



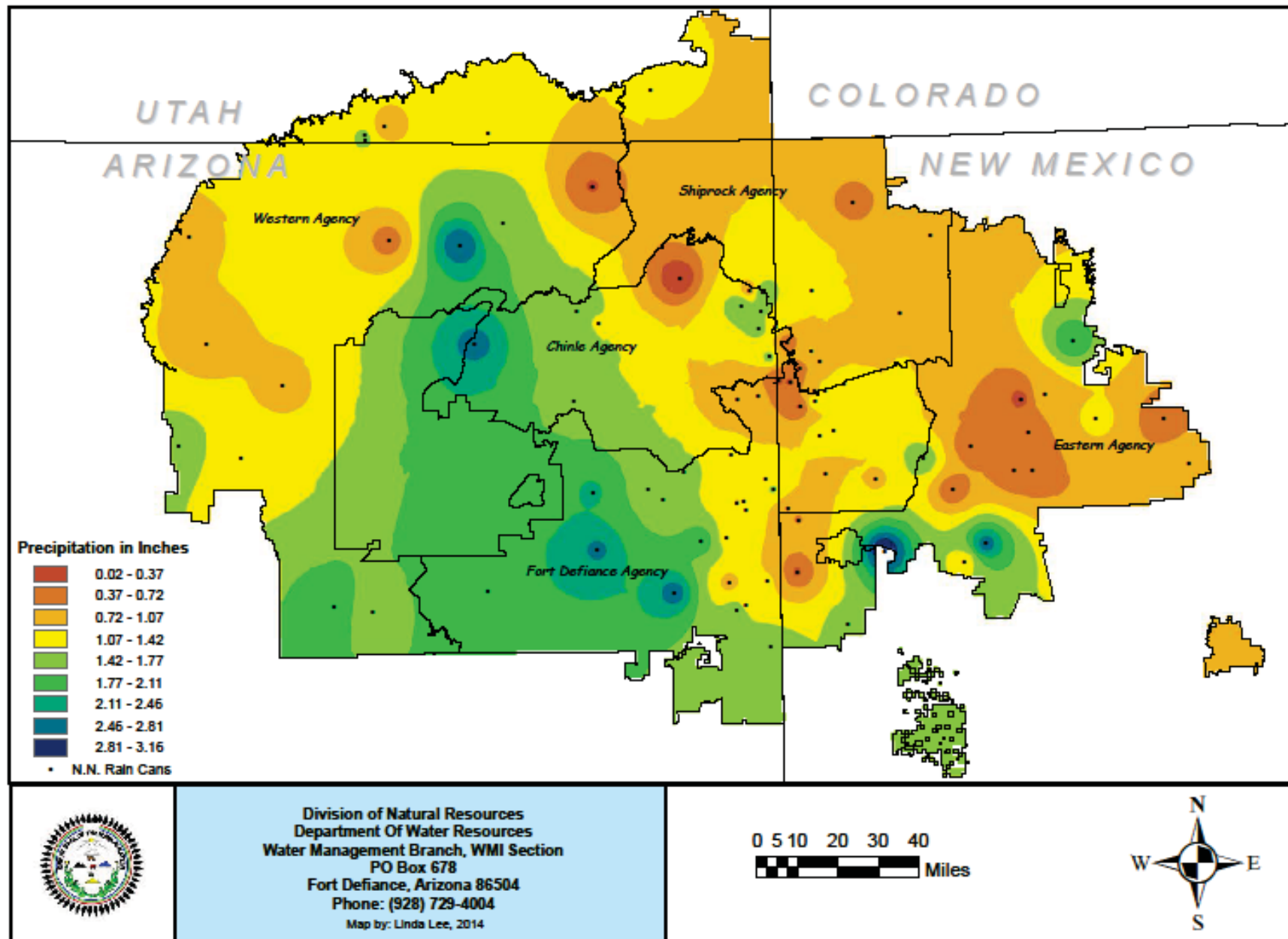
Average Precipitation On The Navajo Nation (May 2014)



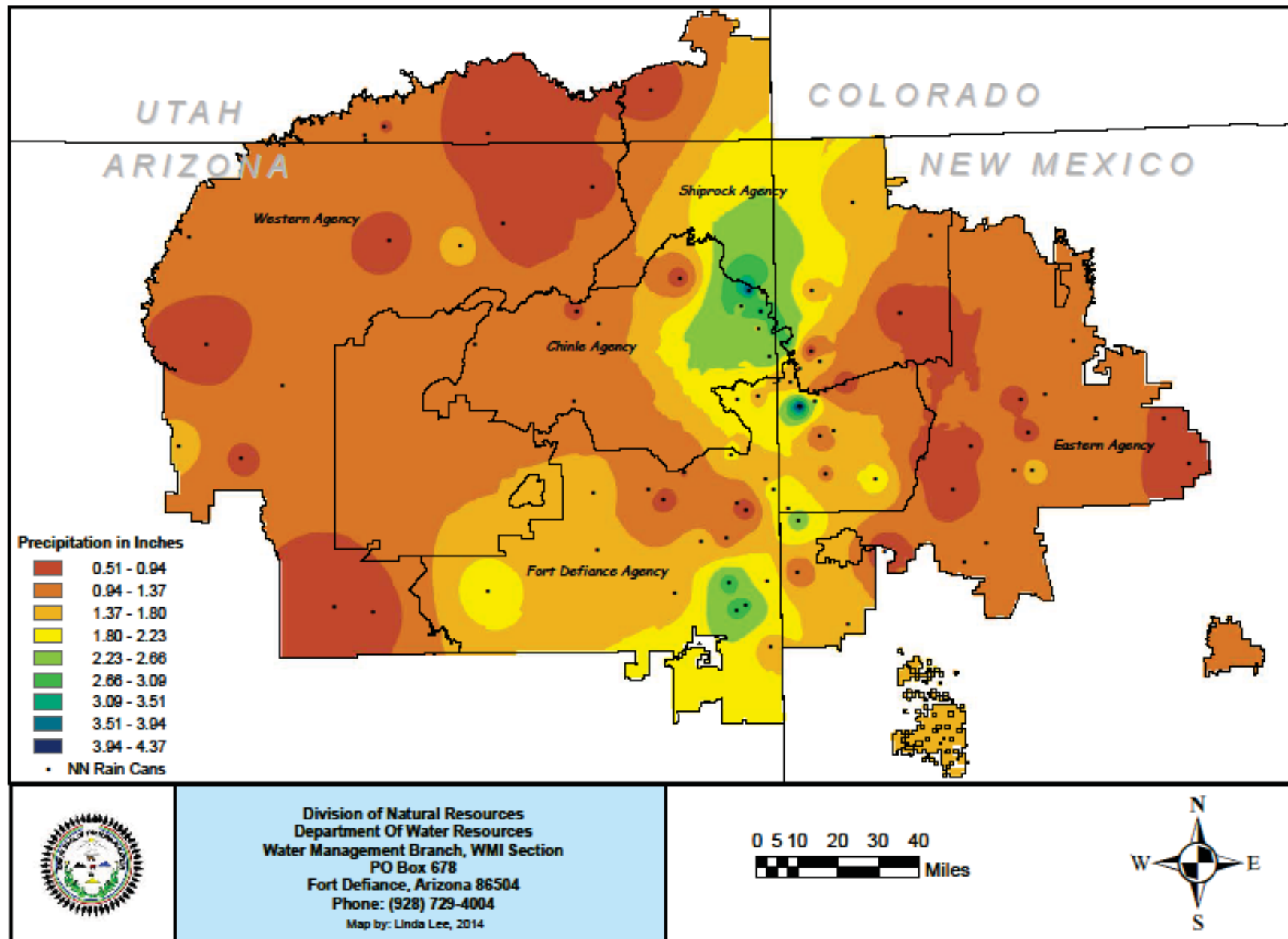
Average Precipitation On The Navajo Nation (July 2014)



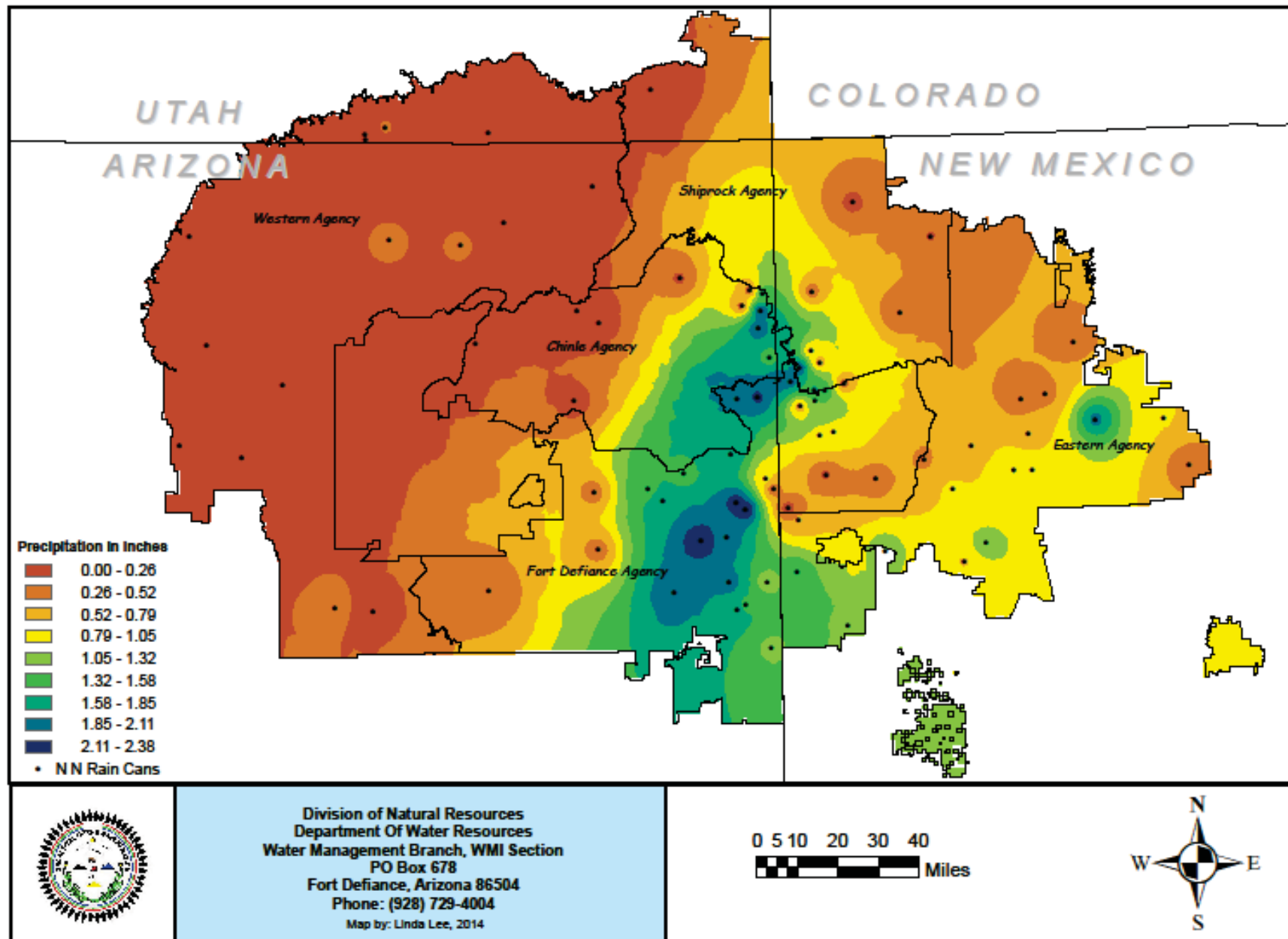
Average Precipitation On The Navajo Nation (August 2014)



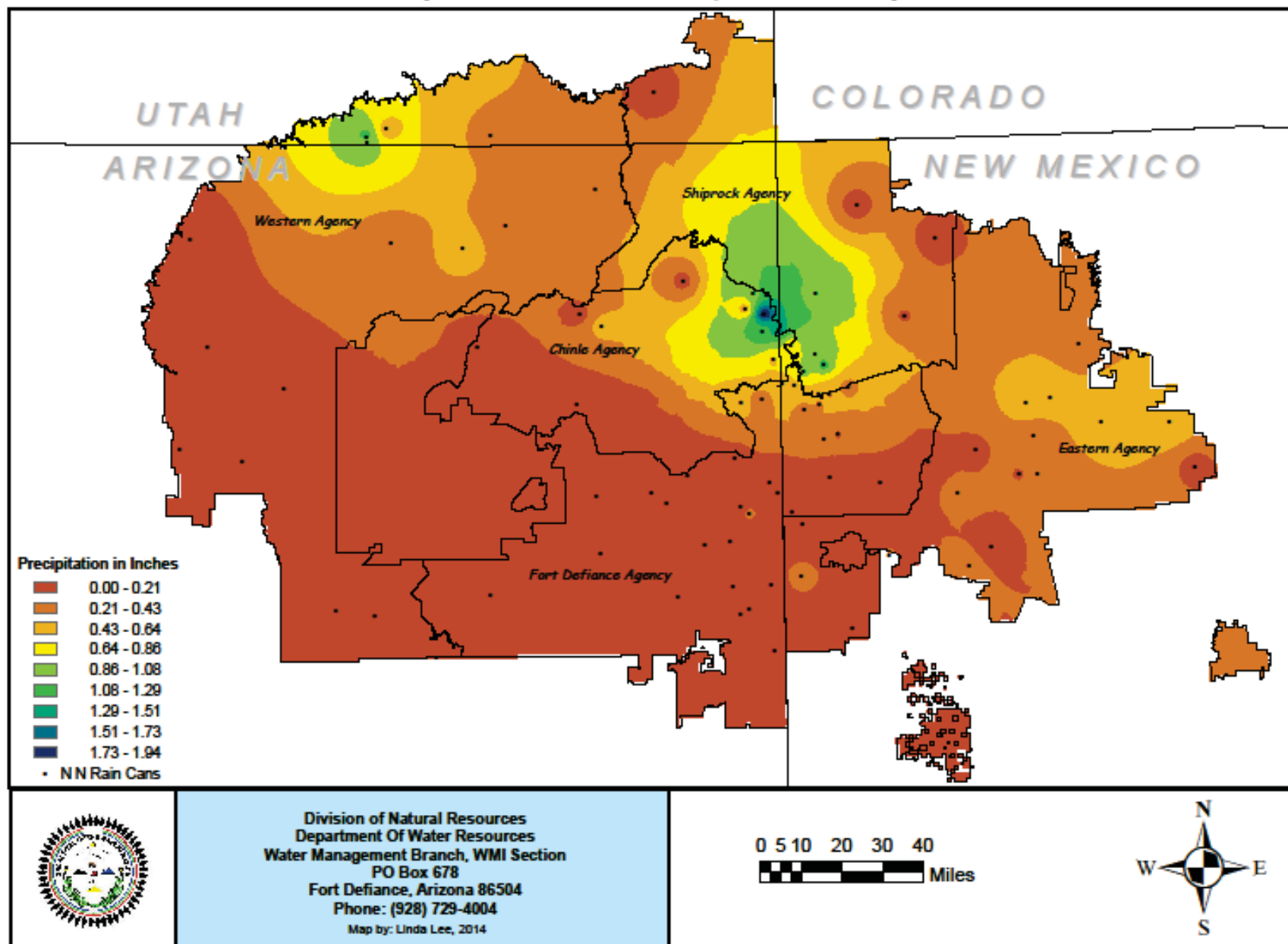
Average Precipitation On The Navajo Nation (September 2014)



Average Precipitation On The Navajo Nation (October 2014, WY 2015)



Average Precipitation On The Navajo Nation (November 2014, WY 2015)



PLAN AHEAD

- Use the data available
- How can it be incorporated/strengthened::
 - Land Use Plans
 - Management Plans
 - Continuation of Plans
 - Build and improve upon it
 - Where can citizens assist?



GET INFORMED

- Be energy efficient
 - See the light
 - Turn down the heat
 - Turn off appliances at night
 - Cool wash and hang to dry
- Choose renewable power
- Eat wisely
 - Locally
 - Seasonably
 - Make meat a treat
- Trim your waste
 - Receive less junk mail
- Use water wisely
 - Don't over-boil the kettle



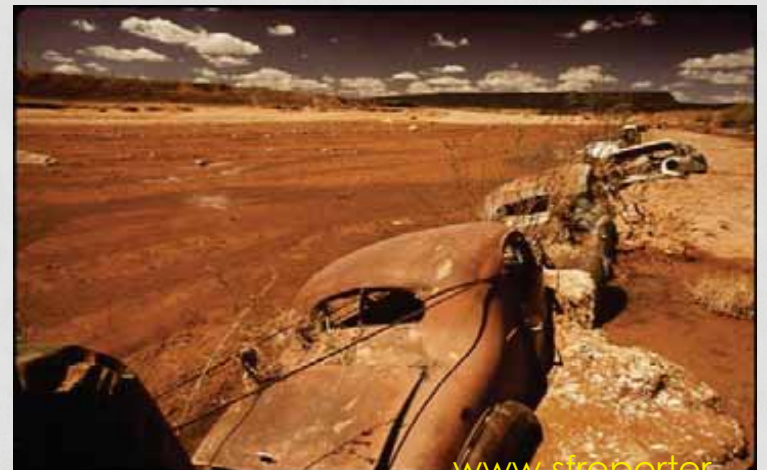
START TAKING ACTION

- Recycle and use recycled products
- Green your commute (walk more)
- Fly less & Travel light
- Get involved
- Support and Donate
- Inflate your tires
- Plant native trees



LEAD BY EXAMPLE

- Be greener at the office
 - Adjust your computer power
- Get involved and educate others about the big picture
 - Encourage others to do the same
- Calculate your household's carbon footprint



SPREAD THE WORD

- <https://www.youtube.com/watch?v=PPeVU6yYXHM&feature=youtu.be>
- “Thule Tuvalu” a film by Matthias Von Gunten
- WWA/CIRES Free Online Course on "Water in the Western United States"
<https://www.coursera.org/course/waterwestUS>
- World Wildlife Federation online training module at www.wwfadapt.org
- <http://www.nws.noaa.gov/om/csd/index.php?section=outreach>
- <http://vimeo.com/118150835>

QUESTIONS/COMMENTS

